

**FAG****2210-K-2RS-TVH-C3**

Self-aligning ball bearing

Self-aligning ball bearing 22..-K-2RS-TVH,  
tapered bore taper 1:12, seals, plastic cage

## Technical information

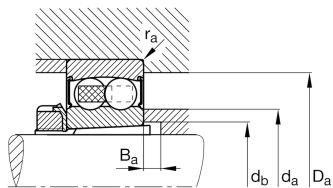
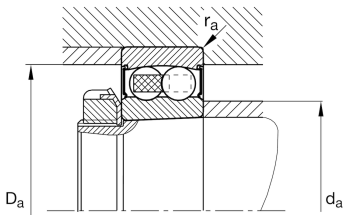


## Your current product variant

Bore type	K	Tapered, taper 1:12
Sealing	2RS	Contact seal on both sides
Cage	TVH	Solid cage made of glass-fiber reinforced polyamide PA66
Tolerance class	PN	Normal (ISO 492:2023)
Radial internal clearance	C3 (Group 3)	Internal clearance larger than CN
Lubricant	GA13	Ball bearing and insert bearing grease

## Main Dimensions &amp; Performance Data

d	50 mm	Bore diameter
D	90 mm	Outside diameter
B	23 mm	Width
$C_r$	22.900 N	Basic dynamic load rating, radial
$C_{0r}$	8.100 N	Basic static load rating, radial
$C_{ur}$	520 N	Fatigue load limit, radial
$n_G$	4.400 1/min	Limiting speed
$\approx m$	0,576 kg	Weight





### Mounting dimensions

$d_{a \min}$	57 mm	Minimum diameter shaft shoulder
$d_{a \max}$	62 mm	Maximum diameter shaft shoulder
$D_{a \max}$	83 mm	Maximum diameter of housing shoulder
$d_{b \min}$	55 mm	Minimum cavity diameter of the sleeve
$B_{a \min}$	9 mm	Minimum cavity width of the sleeve
$r_{a \max}$	1 mm	Maximum fillet radius

### Dimensions

$r_{\min}$	1,1 mm	Minimum chamfer dimension
$D_1$	77,38 mm	Shoulder diameter outer ring
$D_2$	78,95 mm	Caliber diameter outer ring
$d_1$	62,7 mm	Shoulder diameter inner ring
$d_2$	60,48 mm	Caliber diameter inner ring

### Temperature range

$T_{\min}$	-20 °C	Operating temperature min.
$T_{\max}$	100 °C	Operating temperature max.

### Calculation factors

$e$	0,2	Limiting value of $F_a/F_r$ for the applicability of diff. Values of factors X and Y
$Y_1$	3,15	Dynamic axial load factor
$Y_2$	4,87	Dynamic axial load factor
$Y_0$	3,3	Static axial load factor

### Additional information

H310

Adapter sleeve



### Characteristics

---

-  Radial load
-  Axial load in one direction
-  Axial load in two directions
-  Lifetime lubrication, freedom from maintenance
-  Grease Lubrication
-  Sealed on both sides
-  Static angular error and misalignment
-  Dynamic angular error and misalignment