

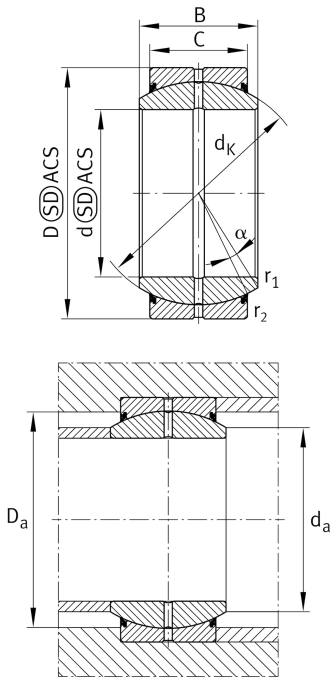
**GE40-DO-2RS-C2**

Spherical plain bearing



High performance radial spherical plain bearing, requiring maintenance, sliding contact surface: steel/steel, DIN ISO 12240-1, dimension series E, sealed High-performance: For highest load rating and lifetime demands

Teknik bilgiler



Mevcut ürün modeliniz

Maintenance	Maintenance required	
Material	Steel	
Type of Seal	2RS	Lip seals on both sides
Radial internal clearance	C2 (Group 2)	Internal clearance smaller than CN
Coating	Durotect M	Inner- and outer ring coated with Durotect M (Manganese Phosphate)

Main Dimensions & Performance Data

d	40 mm	Bore diameter bearing
D	62 mm	Outside diameter bearing
B	28 mm	Width inner ring
C _r	129.000 N	Basic dynamic load rating, radial
C _{0r}	496.000 N	Basic static load rating, radial
≈m	0,297 kg	Ağırlık

Mounting dimensions

r _{1smin}	0,6 mm	Edge Spacing
r _{2smin}	1 mm	Edge Spacing
d _{a max}	45 mm	Connection measure Inner ring
D _{a min}	51 mm	Housing Connection Diameter




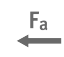
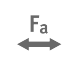


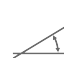

Dimensions

C	22 mm	Width Outer ring
d _K	53 mm	Ball diameter
α	7 °	Tilt angle
d _{OT}	0 mm	Bore diameter bearing, upper tolerance
d _{UT}	-0,012 mm	Bore diameter bearing, lower tolerance
D _{OT}	0 mm	Outside diameter, upper tolerance
D _{UT}	-0,013 mm	Outside diameter, lower tolerance
B _{OT}	0 mm	Width inner ring, upper tolerance
B _{UT}	-0,12 mm	Width inner ring, lower tolerance
C _{OT}	0 mm	Width outer ring, upper tolerance
C _{UT}	-0,3 mm	Width outer ring, lower tolerance
G _r	0,015 - 0,06	Radial Clearance
G _{rmax}	0,12 mm	Radial clearance, maximum
G _{rmin}	0,06 mm	Radial clearance, minimum

Temperature range

T _{min}	-30 °C	Operating temperature min.
T _{max}	130 °C	Operating temperature max.

Özellikleri

-  Radyal yük
-  Tek yönde aksel yük
-  İki yönde aksel yük
-  Gres yağlama
-  Çift taraflı conta
-  Statik açısal hata ve yanlış hizalama
-  Dinamik açısal hata ve yanlış hizalama