

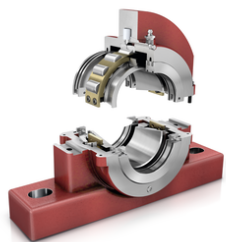


FAG

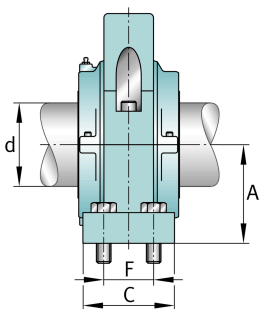
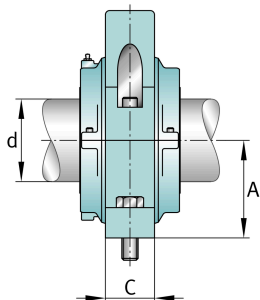
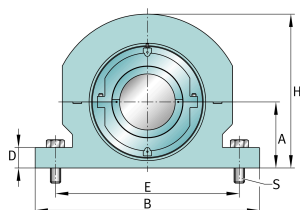
S2SAFH-508-FL

Узел стационарного корпуса

FAG split cylindrical roller bearing housing



Техническая информация



Основные размеры и рабочие характеристики

d	139,7 mm	Shaft diameter
H	423,862 mm	Housing height
A	169,862 mm	Center height
B	558,8 mm	Length Base
≈m	131,542 kg	Вес

Габаритные размеры

	S2SAFH-508-HD	Complete unit held
	S2SAFH-508-FL	Complete unit float
	SAFC-532	Housing designation
D	68,263 mm	Base height
C	158,75 mm	Base width
E _{max}	488,95 mm	Base hole distance 1 max
E _{min}	441,325 mm	Base hole distance 1
F	95,25 mm	Base hole distance 2
S	4	# of Mounting Bolts
S	25,4 mm	Mounting bolt diameter