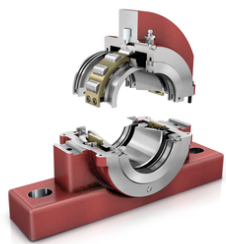


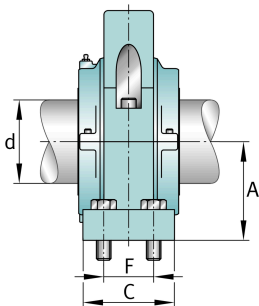
**FAG****S2SAFH-400-FL**

Узел стационарного корпуса

FAG split cylindrical roller bearing housing



Техническая информация



Основные размеры и рабочие характеристики

d	101,6 mm	Shaft diameter
H	296,863 mm	Housing height
A	125,412 mm	Center height
B	419,1 mm	Length Base
≈m	54,431 kg	Bec

Габаритные размеры

	S2SAFH-400-HD	Complete unit held
	S2SAFH-400-FL	Complete unit float
	SAFC-522	Housing designation
D	50,8 mm	Base height
C	120,65 mm	Base width
E _{max}	368,3 mm	Base hole distance 1 max
E _{min}	320,675 mm	Base hole distance 1
F	69,85 mm	Base hole distance 2
S	4	# of Mounting Bolts
S	19,05 mm	Mounting bolt diameter