

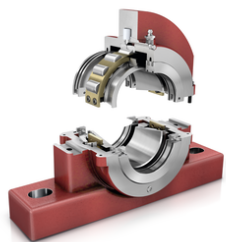


**FAG**

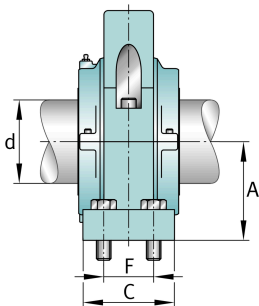
**S2SAFH-150MM-HD**

Узел стационарного корпуса

FAG split cylindrical roller bearing housing



Техническая информация



**Основные размеры и рабочие характеристики**

d	150 mm	Shaft diameter
H	427,037 mm	Housing height
A	179,387 mm	Center height
B	628,65 mm	Length Base
≈m	151,953 kg	Вес

**Габаритные размеры**

	S2SAFH-150MM-HD	Complete unit held
	S2SAFH-150MM-FL	Complete unit float
	SAFC-534	Housing designation
D	55,563 mm	Base height
C	171,45 mm	Base width
E <sub>max</sub>	549,275 mm	Base hole distance 1 max
E <sub>min</sub>	492,125 mm	Base hole distance 1
F	107,95 mm	Base hole distance 2
S	4	# of Mounting Bolts
S	25,4 mm	Mounting bolt diameter