

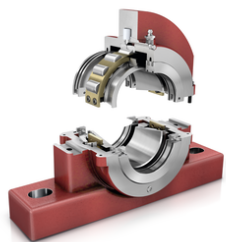


FAG

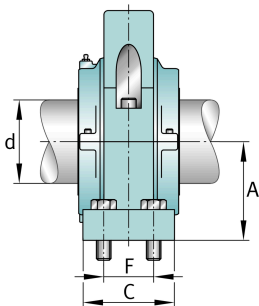
S2SAFH-125MM-HD

Узел стационарного корпуса

FAG split cylindrical roller bearing housing



Техническая информация



Основные размеры и рабочие характеристики

d	125 mm	Shaft diameter
H	371,475 mm	Housing height
A	152,4 mm	Center height
B	511,175 mm	Length Base
≈m	102,058 kg	Вес

Габаритные размеры

	S2SAFH-125MM-HD	Complete unit held
	S2SAFH-125MM-FL	Complete unit float
	SAFC-528	Housing designation
D	60,325 mm	Base height
C	149,225 mm	Base width
E _{max}	434,975 mm	Base hole distance 1 max
E _{min}	406,4 mm	Base hole distance 1
F	85,725 mm	Base hole distance 2
S	4	# of Mounting Bolts
S	25,4 mm	Mounting bolt diameter