

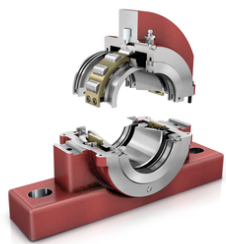


**FAG**

**S2SAFH-308-HD** [↗](#)

Узел стационарного корпуса

FAG split cylindrical roller bearing housing



Техническая информация



**Основные размеры и рабочие характеристики**

d	88,9 mm	Shaft diameter
H	261,938 mm	Housing height
A	114,3 mm	Center height
B	387,35 mm	Length Base
≈m	34,019 kg	Вес

**Габаритные размеры**

	S2SAFH-308-HD	Complete unit held
	S2SAFH-308-FL	Complete unit float
	SAFC-520	Housing designation
D	44,45 mm	Base height
C	111,125 mm	Base width
E <sub>max</sub>	333,375 mm	Base hole distance 1 max
E <sub>min</sub>	295,275 mm	Base hole distance 1
F	60,325 mm	Base hole distance 2
S	4	# of Mounting Bolts
S	19,05 mm	Mounting bolt diameter