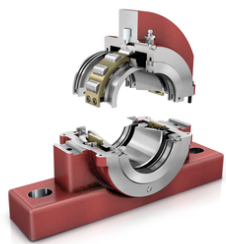


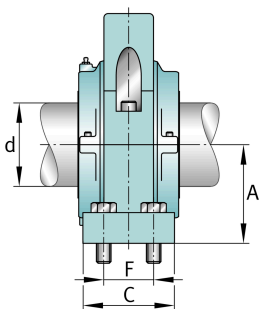
**FAG****S2SAFH-300-HD**

Узел стационарного корпуса

FAG split cylindrical roller bearing housing



## Техническая информация



## Основные размеры и рабочие характеристики

d	76,2 mm	Shaft diameter
H	238,125 mm	Housing height
A	95,25 mm	Center height
B	330,2 mm	Length Base
≈m	25,401 kg	Вес

## Габаритные размеры

S2SAFH-300-HD	Complete unit held	
S2SAFH-300-FL	Complete unit float	
SAFC-517	Housing designation	
D	26,987 mm	Base height
C	88,9 mm	Base width
E <sub>max</sub>	279,4 mm	Base hole distance 1 max
E <sub>min</sub>	250,825 mm	Base hole distance 1
F	53,975 mm	Base hole distance 2
S	4	# of Mounting Bolts
S	15,875 mm	Mounting bolt diameter