

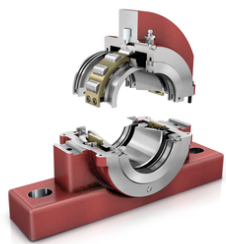


FAG

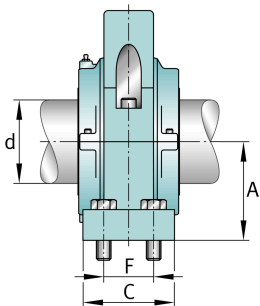
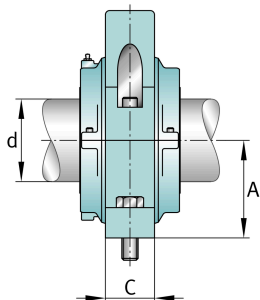
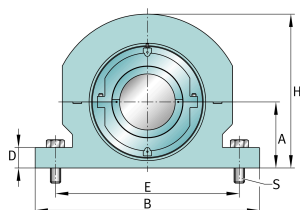
S1SNLH-311-FL

Узел стационарного корпуса

FAG split cylindrical roller bearing housing



Техническая информация



Основные размеры и рабочие характеристики

d	93,662 mm	Shaft diameter
H	273,05 mm	Housing height
A	125,412 mm	Center height
B	409,575 mm	Length Base
≈m	38,102 kg	Bec

Габаритные размеры

	S1SNLH-311-HD	Complete unit held
	S1SNLH-311-FL	Complete unit float
	SNLH-6	Housing designation
D	39,688 mm	Base height
C	58,737 mm	Base width
E	349,25 mm	Base hole distance 1
S	2	# of Mounting Bolts
S	25,4 mm	Mounting bolt diameter