

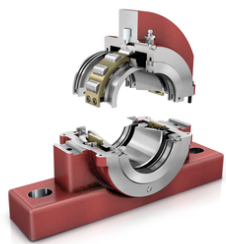


**FAG**

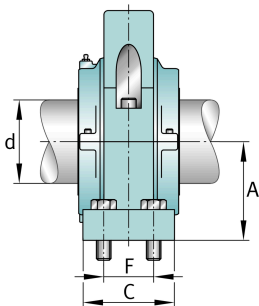
**S1SNLH-408-HD**

Узел стационарного корпуса

FAG split cylindrical roller bearing housing



Техническая информация



**Основные размеры и рабочие характеристики**

d	114,3 mm	Shaft diameter
H	295,275 mm	Housing height
A	123,825 mm	Center height
B	377,825 mm	Length Base
≈m	49,895 kg	Bec

**Габаритные размеры**

	S1SNLH-408-HD	Complete unit held
	S1SNLH-408-FL	Complete unit float
	SNLH-7	Housing designation
D	34,925 mm	Base height
C	142,875 mm	Base width
E	323,85 mm	Base hole distance 1
F	88,9 mm	Base hole distance 2
S	4	# of Mounting Bolts
S	25,4 mm	Mounting bolt diameter