

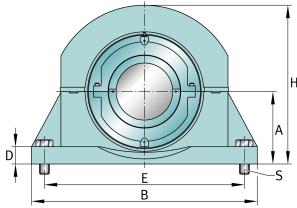
FAG

S2BCH-160MM-HD [↗](#)

Узел стационарного корпуса

FAG split cylindrical roller bearing housing

Техническая информация



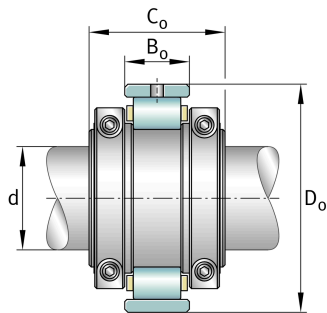
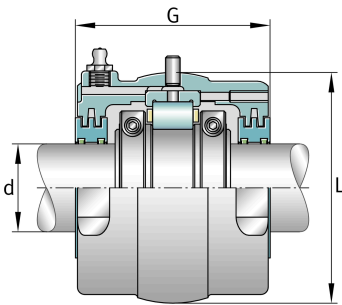
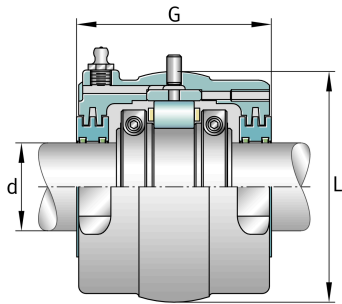
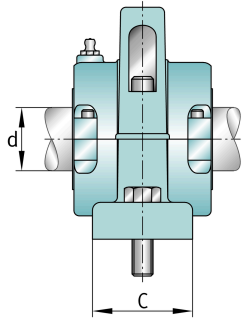
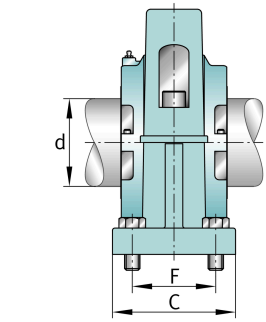
Основные размеры и рабочие характеристики

d	160 mm	Shaft diameter
H	533,4 mm	Housing height
B	596,9 mm	Length base
≈m	184,612 kg	Bec



Габаритные размеры

	S2BCH-160MM-FL	Complete unit float
	S2BCH-160MM-HD	Complete unit held
	PH-22	Housing designation
A	266,7 mm	Center height
C	241,3 mm	Base width
D	44,45 mm	Base height
E _{min}	428,625 mm	Base hole distance 1 min
E _{min}	466,725 mm	Base hole distance 1 max
F	171,45 mm	Base hole distance 2
s	4	# of mounting bolts
s	31,75 mm	Mounting bolt diameter
	S2BC-160MM-FL	Cartridge float bearing
	S2BC-160MM-HD	Cartridge held bearing
	S2C-608	Cartridge
G	231,775 mm	Length through bore
L	368,3 mm	Outside diameter cartridge
	1,451 kg	Grease capacity
	104,735 kg	Cartridge weight
	S2B-160MM-FL	Bearing float
	S2B-160MM-HD	Bearing held
	42,411 kg	Bearing weight
	608 Grp	Bearing group
C _r	694.866,56 N	Динамическая грузоподъемность, радиальная
C _{0r}	1.057.547,584 N	Статическая грузоподъемность, радиальная
C _a	48.514,336 N	Динамическая грузоподъемность, осевая
	1.407 1/min	Limiting speed
D ₀	317,5 mm	Outside diameter bearing
C ₀	139,7 mm	Width inner ring
B ₀	83,337 mm	Width outer ring





Просмотреть сведения о продукте на medias

10.07.2026, 20:02:05 UTC

SCHAEFFLER

