



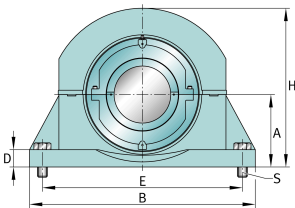
FAG

S2BCH-500-HD [↗](#)

Узел стационарного корпуса

FAG split cylindrical roller bearing housing

Техническая информация



Основные размеры и рабочие характеристики

d	5 in	Shaft diameter
H	15,75 in	Housing height
B	22 in	Length base
≈m	234,001 lbs	Bec



Габаритные размеры

	S2BCH-500-FL	Complete unit float
	S2BCH-500-HD	Complete unit held
	PH-10	Housing designation
A	7,125 in	Center height
C	7 in	Base width
D	1,625 in	Base height
E _{min}	18,5 in	Base hole distance 1 min
E _{min}	20,5 in	Base hole distance 1 max
F	4,75 in	Base hole distance 2
s	4	# of mounting bolts
s	0,875 in	Mounting bolt diameter
	S2BC-500-FL	Cartridge float bearing
	S2BC-500-HD	Cartridge held bearing
	S2C-500	Cartridge
G	7,25 in	Length through bore
L	11,625 in	Outside diameter cartridge
	2,5 lbs	Grease capacity
	111,5 lbs	Cartridge weight
	S2B-500-FL	Bearing float
	S2B-500-HD	Bearing held
	55 lbs	Bearing weight
	500 Grp	Bearing group
C _r	111.370 lbf	Динамическая грузоподъемность, радиальная
C _{0r}	162.763 lbf	Статическая грузоподъемность, радиальная
C _a	951 lbf	Динамическая грузоподъемность, осевая
	1.780 1/min	Limiting speed
D ₀	10 in	Outside diameter bearing
C ₀	4,5 in	Width inner ring
B ₀	2,5 in	Width outer ring





Просмотреть сведения о продукте на medias

10.07.2026, 12:48:53 UTC

SCHAEFFLER

