



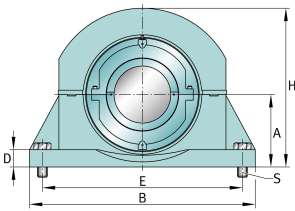
FAG

### S1BCH-304-HD [↗](#)

Узел стационарного корпуса

FAG split cylindrical roller bearing housing

## Техническая информация



### Основные размеры и рабочие характеристики

d	3,25 in	Shaft diameter
B	15 in	Length base
H	10,062 in	Housing height
≈m	64,3 lbs	Bec



### Габаритные размеры

	S1BCH-304-FL	Complete unit float
	S1BCH-304-HD	Complete unit held
	PH-5	Housing designation
A	4,406 in	Center height
C	5,5 in	Base width
D	1,75 in	Base height
E <sub>min</sub>	12,375 in	Base hole distance 1 min
E <sub>max</sub>	13,375 in	Base hole distance 1 max
F	3,5 in	Base hole distance 2
S	4	# of mounting bolts
S	0,75 in	Mounting bolt diameter
	S1BC-304-FL	Cartridge float bearing
	S1BC-304-HD	Cartridge held bearing
	S1C-308	Cartridge
G	5,188 in	Length through bore
L	7 in	Outside diameter cartridge
	656,1 lbs	Grease capacity
	25,5 lbs	Cartridge weight
	S1B-304-FL	Bearing float
	S1B-304-HD	Bearing held
	9,2 lbs	Bearing weight
	308 Grp	Housing group
C <sub>r</sub>	37.301 lbf	Динамическая грузоподъемность, радиальная
C <sub>0r</sub>	52.396 lbf	Статическая грузоподъемность, радиальная
C <sub>a</sub>	450 lbf	Динамическая грузоподъемность, осевая
	2.740 1/min	Limiting speed
D <sub>0</sub>	6 in	Outside diameter bearing
C <sub>0</sub>	2,781 in	Width inner ring
B <sub>0</sub>	1,531 in	Width outer ring





Просмотреть сведения о продукте на medias

26.05.2026, 15:50:10 UTC

SCHAEFFLER

