

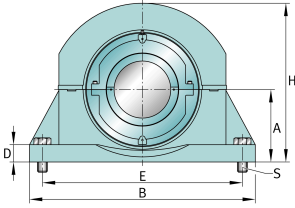
FAG

S1BCH-45MM-HD [↗](#)

Stehlagergehäuseeinheit

FAG split cylindrical roller bearing housing

Teknik bilgiler



Main Dimensions & Performance Data

d	45 mm	Shaft diameter
B	269,875 mm	Length base
H	158,75 mm	Housing height
≈m	8,391 kg	Bec



Dimensions

	S1BCH-45MM-FL	Complete unit float
	S1BCH-45MM-HD	Complete unit held
	PH-2	Housing designation
A	69,85 mm	Center height
C	60,325 mm	Base width
D	25,4 mm	Base height
E _{min}	203,2 mm	Base hole distance 1 min
E _{max}	225,425 mm	Base hole distance 1 max
S	2	# of mounting bolts
S	15,875 mm	Mounting bolt diameter
	S1BC-45MM-FL	Cartridge float bearing
	S1BC-45MM-HD	Cartridge held bearing
	S1C-200	Cartridge
G	95,25 mm	Length through bore
L	117,475 mm	Outside diameter cartridge
	90,673 kg	Grease capacity
	4,173 kg	Cartridge weight
	S1B-45MM-FL	Bearing float
	S1B-45MM-HD	Bearing held
	1,588 kg	Bearing weight
	200 Grp	Housing group
C _r	80.775,68 N	Basic dynamic load rating, radial
C _{0r}	99.346,08 N	Basic static load rating, radial
C _a	1.441,152 N	Basic dynamic load rating, axial
	4.456 1/min	Limiting speed
D ₀	98,425 mm	Outside diameter bearing
C ₀	55,677 mm	Width inner ring
B ₀	25,4 mm	Width outer ring





Ürün ayrıntılarını medias'ta görüntüleyin

26.05.2026, 14:10:07 UTC

SCHAEFFLER

