



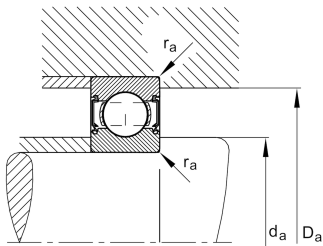
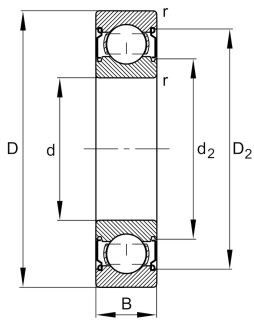
FAG

6305-C-2Z>V

Deep groove ball bearing

Deep groove ball bearing 63...-C-2Z, single row, Generation C, shields, steel sheet metal cage

Technische Informationen



Your current product variant

Versionskennzeichen	>V	Nicht auf dem Lager ersichtlich
Geänderte Innenkonstruktion	C	GenerationC
Dichtung	2Z	Berührungsfreie Deckscheibe beidseitig
Käfig	JN	Stahlblech
Toleranzklasse	P6	Klasse 6 (P6), besser als PN
Maß-/Wärmestabilisierung	SN	Ringe maßstabilisiert bis 120°
Fett	GA14	Kugellagerfett, geräuscharm
Radialluft	CN (Gruppe N)	Lagerluft normal
Bohrungsausführung	Z	Zylindrisch

Main Dimensions & Performance Data

d	25 mm	Bore diameter
D	62 mm	Outside diameter
B	17 mm	Width
C _r	26.500 N	Basic dynamic load rating, radial
C _{0r}	11.500 N	Basic static load rating, radial
C _{ur}	790 N	Fatigue load limit, radial
n _G	15.100 1/min	Limiting speed
n _{gr}	13.500 1/min	Reference speed
m	0,225 kg	Weight



Mounting dimensions

$d_{a \min}$	32 mm	Мин. диаметр заплечика вала
$D_{a \max}$	55 mm	Maximum diameter of housing shoulder
$r_{a \max}$	1 mm	Maximum fillet radius

Dimensions

r_{\min}	1,1 mm	Minimum chamfer dimension
D_1	51,55 mm	Shoulder diameter outer ring
D_2	53,8 mm	Caliber diameter outer ring
d_1	35,45 mm	Диаметр заплечика внутреннего кольца
d_2	34,12 mm	Диаметр кромки у внутреннего кольца

Temperature range

T_{\min}	-20 °C	Operating temperature min.
T_{\max}	120 °C	Operating temperature max.

Calculation factors

f_0	12,4	Calculation factor
-------	------	--------------------

Characteristics

	Radial load
	Axial load in one direction
	Axial load in two directions
	Lifetime lubrication, freedom from maintenance
	Grease Lubrication
	Sealed on both sides