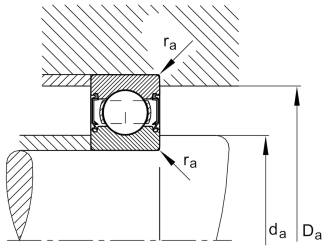
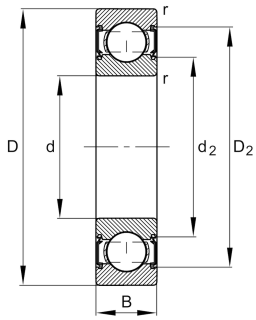


**FAG****6005-C-2HRS-C3>V**

Deep groove ball bearing

Deep groove ball bearing 60...-C-2HRS, single row, Generation C, seals, steel sheet metal cage

## Teknik bilgiler



## Ваш текущий вариант продукта

Version code	>V	Not marked on bearing
Changed internal design	C	GenerationC
Type of Seal	2HRS	Contact seal on both sides
Cage	JN	Steel sheet metal
Tolerance class	P6	Class6 (P6), better then PN
Dimensional / heat stabilization	SN	Rings dimensional stabilized up to 120°
Lubricant	GA14	Ball bearing grease, low noise
Radial internal clearance	C3 (Group 3)	Internal clearance larger than CN
Bore type	Z	Cylindrical

## Main Dimensions &amp; Performance Data

d	25 mm	Bore diameter
D	47 mm	Outside diameter
B	12 mm	Width
C <sub>r</sub>	12.600 N	Basic dynamic load rating, radial
C <sub>0r</sub>	6.500 N	Basic static load rating, radial
C <sub>ur</sub>	420 N	Fatigue load limit, radial
n <sub>G</sub>	12.900 1/min	Limiting speed
≈m	0,075 kg	Bec



### Mounting dimensions

$d_{a \min}$	28,2 mm	Minimum diameter shaft shoulder
$D_{a \max}$	43,8 mm	Maximum diameter of housing shoulder
$r_{a \max}$	0,6 mm	Maximum fillet radius

### Dimensions

$r_{\min}$	0,6 mm	Minimum chamfer dimension
$D_1$	40,73 mm	Shoulder diameter outer ring
$D_2$	42,66 mm	Caliber diameter outer ring
$d_1$	31,27 mm	Shoulder diameter inner ring
$d_2$	29,93 mm	Caliber diameter inner ring

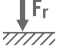
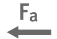




### Temperature range

$T_{\min}$	-20 °C	Operating temperature min.
$T_{\max}$	100 °C	Operating temperature max.

### Calculation factors

$f_0$	14,3	Calculation factor
-------	------	--------------------

### Характеристики

	Радиальная нагрузка
	Осевая нагрузка в одном направлении
	Осевая нагрузка в обоих направлениях
	Смазка на весь срок службы, не требуют обслуживания
	Смазывание пластичной смазкой
	Уплотнения с обеих сторон