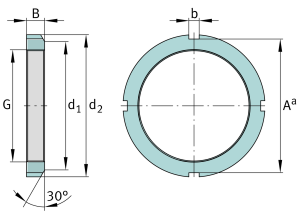
**FAG****KM4**

Locknut

Locknuts KM, main dimensions to DIN 981

Technical information



Main Dimensions & Performance Data

G	M20x1	Thread
d ₂	32 mm	Outerside diameter
B	6 mm	Width
≈m	21 g	Weight

Mounting dimensions

d ₁	26 mm	Chamfer diameter
b	4 mm	Width retaining slot
A ^a	28 mm	Groove base distance

Additional information

F	12.000 N	Axial load capacity, static
	MB4	Fuse
	30 °	Chamfer angle