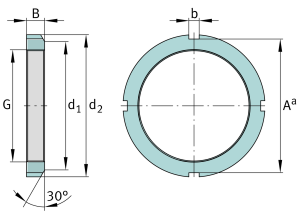
**FAG****KM14**

Locknut

Locknuts KM, main dimensions to DIN 981

Technical information

**Main Dimensions & Performance Data**

G	M70x2	Thread
d ₂	92 mm	Outerside diameter
B	12 mm	Width
≈m	272 g	Weight

Mounting dimensions

d ₁	85 mm	Chamfer diameter
b	8 mm	Width retaining slot
A ^a	85 mm	Groove base distance

Additional information

F	118.000 N	Axial load capacity, static
	MB14	Fuse
	30 °	Chamfer angle