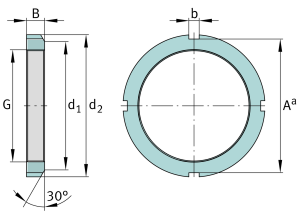


**FAG****KM1**

Locknut

Locknuts KM, main dimensions to DIN 981

Technical information



Main Dimensions & Performance Data

G	M12x1	Thread
d ₂	22 mm	Outerside diameter
B	4 mm	Width
≈m	7 g	Weight

Mounting dimensions

d ₁	17 mm	Chamfer diameter
b	3 mm	Width retaining slot
A ^a	18 mm	Groove base distance

Additional information

F	6.000 N	Axial load capacity, static
	MB1	Fuse
	30 °	Chamfer angle