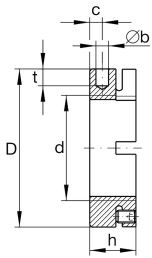
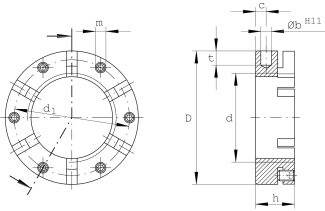
**AM55**

Precision locknut

Precision locknuts AM, segments for clamping

Technical information

**Main Dimensions & Performance Data**

d	M55X2	Thread
D	85 mm	Outside diameter
h	26 mm	Height
F _{aB}	520.000 N	Breaking load, axial
M _L	320 Nm	Breakawag
M _{AL}	95 Nm	Mounting torque reference
M _m	7,7 kg*cm ²	Mass moment of inertia
≈m	563 g	Weight

Mounting dimensions

M _m	15 Nm	Mounting torque set screw
----------------	-------	---------------------------

Dimensions

b	6 mm	Bore diameter blind hole
t	8 mm	Depth blind hole
d ₁	75 mm	Pitch circle diameter 1 (holes)
c	8 mm	Distance bore
m	M8	Threaded - threaded pin
	H11	Bore diameter blind hole housing fit