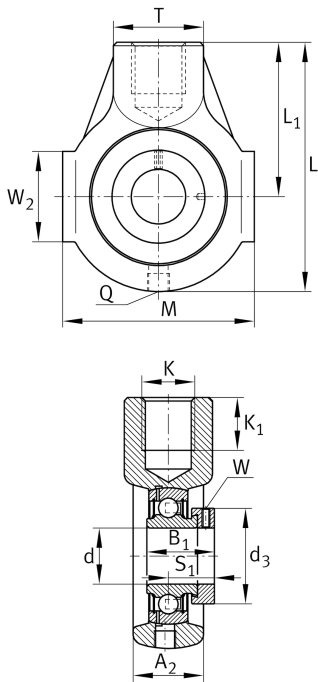


**PHE25-N** [↗](#)

Take-up housing unit

Take-up housing unit PHE-N, RIBB cast iron HE

Technical information

**Your current product variant**

Groove	N	Cast iron housing with undercut slot for end caps
Material	GG	Grey cast iron

Main Dimensions & Performance Data

d	25 mm	Bore diameter
L	99 mm	Length total
M	70 mm	Housing total width
A ₂	28 mm	Width housing
≈m	0,69 kg	Weight

Mounting dimensions

K	M20	Thread fixing bore
K ₁	22 mm	Thread depth

Dimensions

L ₁	64 mm	Distance shaft axis
T	35 mm	Height housing fixing side
W ₂	38 mm	Length of guidance face
Q	Rp1/8	Connection thread for lubrication



Additional information

GEHHE05-GG-N	Housing
GRAE25-NPP-B	Bearing designation

Temperature range

T _{min}	-20 °C	Operating temperature min.
T _{max}	120 °C	Operating temperature max.