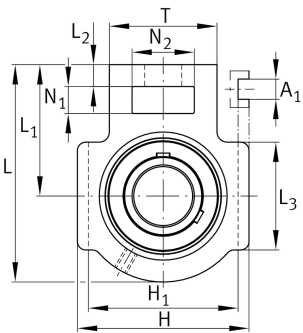


**FAG****UCT209**

## Take-up housing unit

Housing units UCT, cast iron housing, radial insert ball bearing with grub screws in inner ring, RSR seals, for linear motion

## Technical information

**Your current product variant**

|          |    |                |
|----------|----|----------------|
| Material | GG | Grey cast iron |
|----------|----|----------------|

**Main Dimensions & Performance Data**

|                 |          |                                   |
|-----------------|----------|-----------------------------------|
| d               | 45 mm    | Bore diameter                     |
| H               | 117 mm   | Height                            |
| L               | 144 mm   | Length total                      |
| C <sub>0r</sub> | 20.400 N | Basic static load rating, radial  |
| C <sub>ur</sub> | 1.060 N  | Fatigue load limit, radial        |
| C <sub>r</sub>  | 34.500 N | Basic dynamic load rating, radial |
| ≈m              | 2,404 kg | Weight                            |

**Mounting dimensions**

|                |         |  |
|----------------|---------|--|
| A <sub>1</sub> | 16 mm   | Width guidance groove                    |
|                | 0,2 mm  | Upper width guidance groove tolerance    |
|                | 0 mm    | Lower width guidance groove tolerance    |
| H <sub>1</sub> | 102 mm  | Distance guidance grooves                |
|                | 0 mm    | Upper distance guidance groove tolerance |
|                | -0,5 mm | Lower distance guidance groove tolerance |
| N              | 29 mm   | Fixing bore                              |



### Dimensions

|                |         |                                       |
|----------------|---------|---------------------------------------|
| L <sub>1</sub> | 87 mm   | Distance shaft axis                   |
| L <sub>2</sub> | 16 mm   | Length fixed link                     |
| L <sub>3</sub> | 83 mm   | Length guidance groove                |
| A              | 49 mm   | Width housing fixing side             |
| N <sub>1</sub> | 19 mm   | Width recess                          |
| N <sub>2</sub> | 49 mm   | Height recess                         |
| B              | 49,2 mm | Width inner ring                      |
| S <sub>1</sub> | 30,2 mm | Distance of raceway to locking collar |
| T              | 83 mm   | Height housing fixing side            |
| Q              | M6      | Connection thread for lubrication     |
| A <sub>2</sub> | 35 mm   | Width housing                         |

### Additional information

|       |                     |
|-------|---------------------|
| T209  | Housing             |
| UC209 | Bearing designation |

### Temperature range

|                  |        |                            |
|------------------|--------|----------------------------|
| T <sub>min</sub> | -20 °C | Operating temperature min. |
| T <sub>max</sub> | 120 °C | Operating temperature max. |