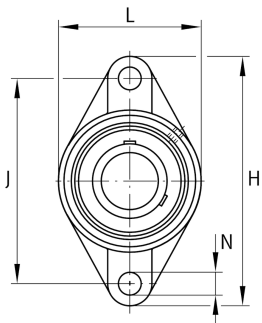


**FAG****UCFL210** [↗](#)

Flanged housing unit

Flanged housing unit UCFL

Technical information

**Your current product variant**

Material	GG	Grey cast iron
----------	----	----------------

Main Dimensions & Performance Data

d	50 mm	Bore diameter
L	115 mm	Flange width
H	197 mm	Height flange
U	54,6 mm	Total height unit
C _r	37.500 N	Basic dynamic load rating, radial
C _{0r}	23.200 N	Basic static load rating, radial
C _{ur}	1.210 N	Fatigue load limit, radial
≈m	2,28 kg	Weight

Mounting dimensions

J	157 mm	Distance fixing bore
N	19 mm	Fixing bore
n	2	Number of screwing holes



Dimensions

A	40 mm	Height housing
A ₁	18 mm	Thickness of flange
A ₂	22 mm	Distance raceway
B	51,6 mm	Width
Q	M6	Connection thread for lubrication

Additional information

1	Number of housings
FL210	Housing
UC210	Bearing designation

Temperature range

T _{min}	-20 °C	Operating temperature min.
T _{max}	120 °C	Operating temperature max.