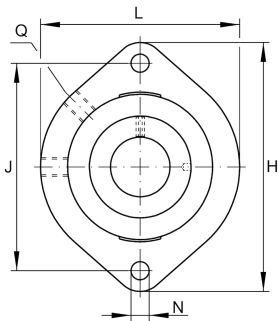
**GLCTE15-XL-FA125.8**

Flanged housing unit

Flanged housing unit GLCTE...-XL-FA125.8

X-life

Technical information



Your current product variant

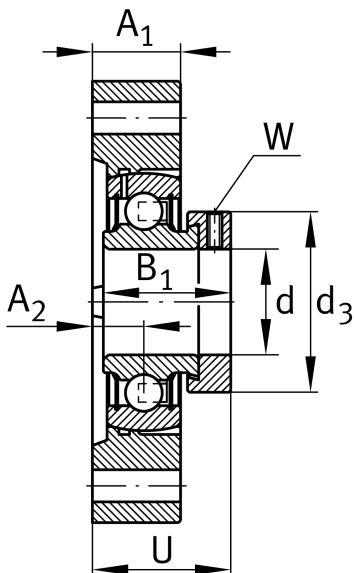
Material	GG	Grey cast iron
Manufacturing instruction	FA125.8	Housing with Corroctect coating

Main Dimensions & Performance Data

d	15 mm	Bore diameter
L	58,7 mm	Flange width
H	81 mm	Height flange
U	30,5 mm	Total height unit
C _r	10.100 N	Basic dynamic load rating, radial
C _{0r}	4.750 N	Basic static load rating, radial
C _{ur}	248 N	Fatigue load limit, radial
≈m	0,3 kg	Weight

Mounting dimensions

J	63,5 mm	Distance fixing bore
N	6,6 mm	Fixing bore
W	3 mm	Width across flats
n	2	Number of screwing holes





Dimensions

A ₁	15 mm	Thickness of flange
A ₂	8,4 mm	Distance raceway
B ₁	28,6 mm	Locking collar total width
Q	M6	Connection thread for lubrication
d ₃	28,4 mm	Outside diameter eccentric locking collar

Additional information

1	Number of housings
GEHGLCTE03-GG-FA125.1	Housing
GRAE15-XL-NPP-B	Bearing designation

Temperature range

T _{min}	-20 °C	Operating temperature min.
T _{max}	120 °C	Operating temperature max.