

IMAGE
COMING SOON**GLCTE30-TV-FA125.5**

Flanged housing unit

Flanged housing unit GLCTE...-TV

Technical information

Your current product variant

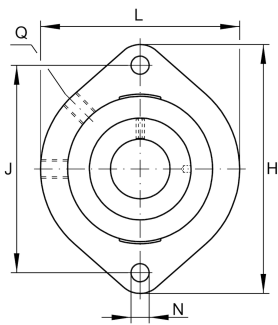
Material	TV	Plastic
Manufacturing instruction	FA125.5	Bearing with Corrotect coating

Main Dimensions & Performance Data

d	30 mm	Bore diameter
L	84 mm	Flange width
H	112,5 mm	Height flange
U	38,3 mm	Total height unit
C_r	17.100 N	Basic dynamic load rating, radial
C_{0r}	9.200 N	Basic static load rating, radial
C_{0rG}	12.000 N	Load carrying capacity (housing)
$\approx m$	0,47 kg	Weight

Mounting dimensions

J	90,5 mm	Distance fixing bore
N	11,5 mm	Fixing bore
n	2	Number of screwing holes





Dimensions

A ₁	20,5 mm	Thickness of flange
A ₂	11,5 mm	Distance raceway
B ₁	35,8 mm	Locking collar total width
Q	1/4-28 UNF	Connection thread for lubrication
d ₃	44 mm	Outside diameter eccentric locking collar

Additional information

1	Number of housings
GLCTE06-TV	Housing
GRAE30-NPP-B-FA107/125.5	Bearing designation
KASK06-S-G	Protecting cap

Temperature range

T _{min}	-35 °C	Operating temperature min.
T _{max}	100 °C	Operating temperature max.