

IMAGE
COMING SOON**GLCTE20-TV-FA125.5**

Flanged housing unit

Flanged housing unit GLCTE...-TV

Technical information

Your current product variant

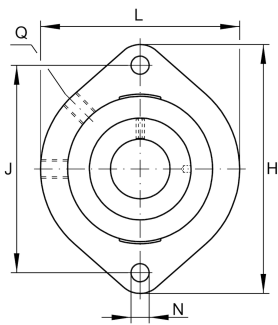
Material	TV	Plastic
Manufacturing instruction	FA125.5	Bearing with Corrotect coating

Main Dimensions & Performance Data

d	20 mm	Bore diameter
L	66,5 mm	Flange width
H	90,5 mm	Height flange
U	33,5 mm	Total height unit
C_r	13.600 N	Basic dynamic load rating, radial
C_{0r}	6.600 N	Basic static load rating, radial
C_{0rG}	7.200 N	Load carrying capacity (housing)
$\approx m$	0,26 kg	Weight

Mounting dimensions

J	71,4 mm	Distance fixing bore
N	9 mm	Fixing bore
n	2	Number of screwing holes





Dimensions

A ₁	18,4 mm	Thickness of flange
A ₂	9,5 mm	Distance raceway
B ₁	31 mm	Locking collar total width
Q	1/4-28 UNF	Connection thread for lubrication
d ₃	33 mm	Outside diameter eccentric locking collar

Additional information

1	Number of housings
GLCTE04-TV	Housing
GRAE20-NPP-B-FA107/125.5	Bearing designation
KASK04-S-G	Protecting cap

Temperature range

T _{min}	-35 °C	Operating temperature min.
T _{max}	100 °C	Operating temperature max.