

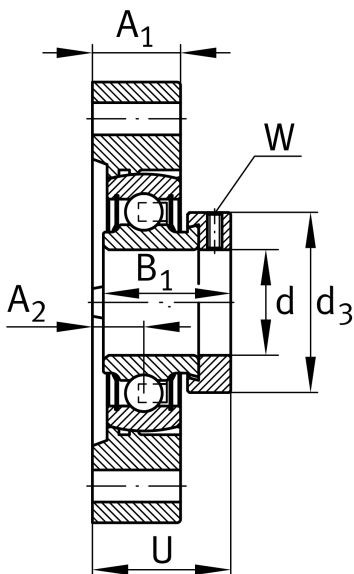
**FLCTE30-XL**

Flanged housing unit

Housing units FLCTE, two-bolt flanged housing units, cast iron, eccentric locking collar, P seals, without relubrication facility

X-life

Technical information



Your current product variant

Material	GG	Grey cast iron
----------	----	----------------

Main Dimensions & Performance Data

d	30 mm	Bore diameter
L	84 mm	Flange width
H	112,5 mm	Height flange
U	38,1 mm	Total height unit
C _r	20.700 N	Basic dynamic load rating, radial
C _{0r}	11.300 N	Basic static load rating, radial
C _{ur}	480 N	Fatigue load limit, radial
≈m	0,76 kg	Weight

Mounting dimensions

J	90,5 mm	Distance fixing bore
N	11,5 mm	Fixing bore
W	4 mm	Width across flats
n	2	Number of screwing holes



Dimensions

A ₁	22,5 mm	Thickness of flange
A ₂	11,4 mm	Distance raceway
B ₁	35,8 mm	Locking collar total width
d ₃	44 mm	Outside diameter eccentric locking collar

Additional information

GG.LCTE06-E	Housing
RAE30-XL-NPP-B	Bearing designation

Temperature range

T _{min}	-20 °C	Operating temperature min.
T _{max}	100 °C	Operating temperature max.