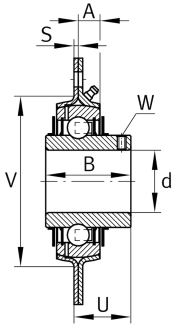
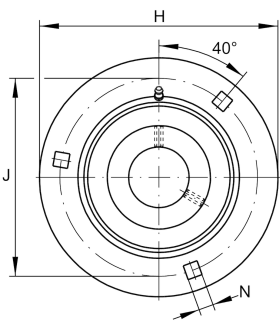


**GRRY20-VA**

Flanged housing unit

Flanged housing unit GRRY..-VA

## Technical information

**Your current product variant**

Material	VA	Stainless Steel
Special material	VA	Corrosion-resistant VA design

**Main Dimensions & Performance Data**

d	20 mm	Bore diameter
H <sub>2</sub>	90,5 mm	Height flange
H	90,5 mm	Height flange
U	20,3 mm	Total height unit
C <sub>r</sub>	12.300 N	Basic dynamic load rating, radial
C <sub>0r</sub>	6.300 N	Basic static load rating, radial
C <sub>ur</sub>	310 N	Fatigue load limit, radial
C <sub>0rG</sub>	3.200 N	Load carrying capacity (housing)
≈m	0,32 kg	Weight

**Mounting dimensions**

J	71,5 mm	Pitch circle diameter (holes)
N	8,7 mm	Fixing square
n	3	Number of screwing holes



### Dimensions

A	8 mm	Height housing
B	31 mm	Width
S	2 mm	Thickness of flange
V	55 mm	Shoulder diameter housing
d <sub>3</sub>	44 mm	Outside diameter eccentric locking collar
	55 mm	Shoulder diameter housing

### Additional information

	1	Number of housings
	1	Number of housings 2
	FLAN47-MSB-VA	Housing
	FLAN47-MSA-VA	Housing (Part 2)
	GYE20-KRR-B-VA	Bearing designation

### Temperature range

T <sub>min</sub>	-35 °C	Operating temperature min.
T <sub>max</sub>	100 °C	Operating temperature max.