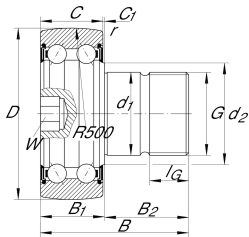


**KR5203-2RS** **Stud type track roller**

Stud type track rollers KR52...-2RS, double row self-retaining angular contact ball bearings with particularly thick-walled outer ring, ball and cage assembly, without eccentric collar and with a solid, long roller stud with external thread, axial guidance of outer ring is provided by the balls, lip seal on both sides, with axial sealing action, assembling aid hexagonal socket only on the flange side end face, no relubrication facility

Technical information

**Your current product variant**

Sealing	2RS	Lip seal on both sides, with axial sealing action
Outer ring profile	R500	R500
Relubrication facility	Without	Without
Assembling aid head	I6	Hexagon socket

Main Dimensions & Performance Data

D	47 mm	Outside diameter
d ₁	18 mm	Fit diameter of roller stud / stud
B	58,8 mm	Width
C _{r w}	12.700 N	Basic dynamic load rating, radial
C _{0 r w}	8.500 N	Basic static load rating, radial
C _{u r w}	425 N	Fatigue load limit, radial
n _{D G}	5.500 1/min	Speed on permanent grease lubrication
≈m	0,29 kg	Weight









Dimensions

B 1 max	18,5 mm	Maximum width of thrust washer
B 2	40,5 mm	Bolt/stud length effectively
C	17,5 mm	Width, outer ring
C 1	0,8 mm	Protrusion outer ring to thrust washer
d 2	22,9 mm	Stop diameter of thrust washer
r min	0,6 mm	Minimum chamfer dimension
G	M18X1,5	Thread
l G	21 mm	Thread length
W	8 mm	Width of flats
R	500 mm	Radius of outer ring outside profile

Additional information

M A	115 Nm	Tightening torque nut
-----	--------	-----------------------

Characteristics

-  Radial load
-  Axial load in one direction
-  Axial load in two directions
-  Lifetime lubrication, freedom from maintenance
-  Grease Lubrication
-  Sealed on both sides