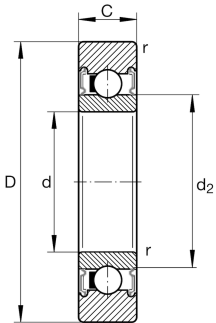
**LR201-X-2RSR**

## Yoke type track roller

Yoke type track rollers LR2..-2RS/2RSR, single row self-retaining ball bearings with particularly thick-walled outer ring, ball and cage assembly and an inner ring, axial guidance of outer ring is provided by the balls, lip seal on both sides, with axial sealing action/with radial sealing action

## Technical information



## Your current product variant

Sealing	2RSR	Lip seal on both sides, with radial sealing action
Outer ring profile	X	Cylindrical profile
Relubrication facility	Without	Without

## Main Dimensions &amp; Performance Data

D	35 mm	Outside diameter
d	12 mm	Bore diameter
C	10 mm	Height
$C_{rw}$	6.000 N	Basic dynamic load rating, radial
$C_{0rw}$	2.850 N	Basic static load rating, radial
$C_{urw}$	143 N	Fatigue load limit, radial
$n_{DG}$	12.000 1/min	Speed on permanent grease lubrication
$m$	0,047 kg	Weight

## Dimensions

$d_2$	18,3 mm	Diameter of thrust washer
$r_{min}$	0,6 mm	Minimum chamfer dimension
R	500 mm	Radius of outer ring outside profile



### Characteristics

---



Radial load



Axial load in one direction



Axial load in two directions



Lifetime lubrication, freedom from maintenance



Grease Lubrication



Sealed on both sides