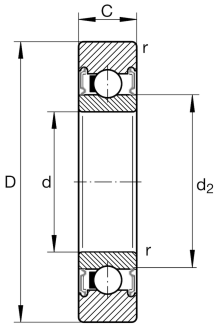
**LR207-X-2RS**

## Yoke type track roller

Yoke type track rollers LR2...-2RS/2RSR, single row self-retaining ball bearings with particularly thick-walled outer ring, ball and cage assembly and an inner ring, axial guidance of outer ring is provided by the balls, lip seal on both sides, with axial sealing action/with radial sealing action

## Technical information



## Your current product variant

|                        |         |   |
|------------------------|---------|---|
| Sealing                | 2RS     | Lip seal on both sides, with axial sealing action |
| Outer ring profile     | X       | Cylindrical profile                               |
| Relubrication facility | Without | Without   |

## Main Dimensions &amp; Performance Data

|                    |             |                                       |
|--------------------|-------------|---------------------------------------|
| D                  | 80 mm       | Outside diameter                      |
| d                  | 35 mm       | Bore diameter                         |
| C                  | 17 mm       | Height                                |
| C <sub>r w</sub>   | 21.900 N    | Basic dynamic load rating, radial     |
| C <sub>0 r w</sub> | 12.400 N    | Basic static load rating, radial      |
| C <sub>u r w</sub> | 660 N       | Fatigue load limit, radial            |
| n <sub>D G</sub>   | 4.500 1/min | Speed on permanent grease lubrication |
| m                  | 0,4 kg      | Weight                                |

## Dimensions

|                  |         |                                      |
|------------------|---------|--------------------------------------|
| d <sub>2</sub>   | 42,4 mm | Diameter of thrust washer            |
| r <sub>min</sub> | 1,1 mm  | Minimum chamfer dimension            |
| R                | 500 mm  | Radius of outer ring outside profile |



### Characteristics

---



Radial load



Axial load in one direction



Axial load in two directions



Lifetime lubrication, freedom from maintenance



Grease Lubrication



Sealed on both sides