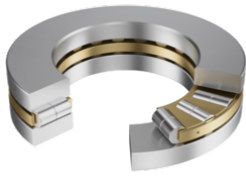


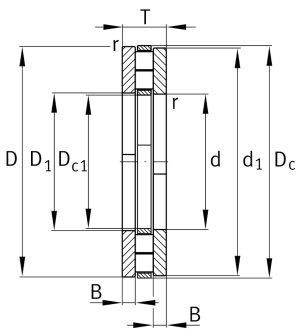
**89480-M**

Axial cylindrical roller bearing

Axial cylindrical roller bearings 894, single direction, comprising K894, GS, WS



Technical information

**Main Dimensions & Performance Data**

d	400 mm	Bore diameter
D	710 mm	Outside diameter
T	185 mm	Height
C _a	7.800.000 N	Basic dynamic load rating, axial
C _{0a}	30.000.000 N	Basic static load rating, axial
C _{ua}	2.110.000 N	Fatigue load limit, axial
n _G	520 1/min	Limiting speed
n _{gr}	138 1/min	Reference speed
≈m	344,3 kg	Weight

Dimensions

D ₁	405 mm	Bore diameter housing washer
d ₁	705 mm	Rip diameter shaft washer
B	52,5 mm	Width
r _{min}	7,5 mm	Minimum chamfer dimension

Temperature range

T _{min}	-20 °C	Operating temperature min.
T _{max}	120 °C	Operating temperature max.



Additional information

K89480-M	Axial roller and cage assembly
GS89480	Housing Washer
WS89480	Shaft washer

Characteristics

 Axial load in one direction

 Grease Lubrication

 Oil Lubrication

 Not sealed