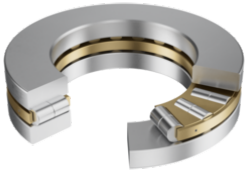


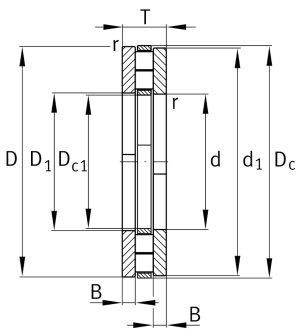
**89456-M**

Axial cylindrical roller bearing

Axial cylindrical roller bearings 894, single direction, comprising K894, GS, WS



Technical information

**Main Dimensions & Performance Data**

| | | |
|-----------------|--------------|----------------------------------|
| d | 280 mm | Bore diameter |
| D | 520 mm | Outside diameter |
| T | 145 mm | Height |
| C _a | 4.250.000 N | Basic dynamic load rating, axial |
| C _{0a} | 17.600.000 N | Basic static load rating, axial |
| C _{ua} | 1.450.000 N | Fatigue load limit, axial |
| n _G | 720 1/min | Limiting speed |
| n _{gr} | 199 1/min | Reference speed |
| ≈m | 155,92 kg | Weight |

Dimensions

| | | |
|------------------|--------|------------------------------|
| D ₁ | 285 mm | Bore diameter housing washer |
| d ₁ | 520 mm | Rip diameter shaft washer |
| r _{min} | 6 mm | Minimum chamfer dimension |

Temperature range

| | | |
|------------------|--------|----------------------------|
| T _{min} | -20 °C | Operating temperature min. |
| T _{max} | 120 °C | Operating temperature max. |




Additional information

| | |
|----------|--------------------------------|
| K89456-M | Axial roller and cage assembly |
| GS89456 | Housing Washer |
| WS89456 | Shaft washer |

Characteristics

 Axial load in one direction

 Grease Lubrication

 Oil Lubrication

 Not sealed

 Large bearing