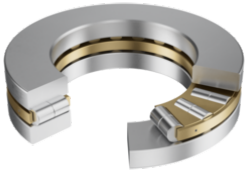


**89448-M**

Axial cylindrical roller bearing

Axial cylindrical roller bearings 894, single direction, comprising K894, GS, WS



Technical information

**Main Dimensions & Performance Data**

d	240 mm	Bore diameter
D	440 mm	Outside diameter
T	122 mm	Height
C _a	3.000.000 N	Basic dynamic load rating, axial
C _{0a}	12.200.000 N	Basic static load rating, axial
C _{ua}	1.040.000 N	Fatigue load limit, axial
n _G	850 1/min	Limiting speed
n _{gr}	250 1/min	Reference speed
≈m	95,908 kg	Weight

Dimensions

D ₁	240 mm	Bore diameter housing washer
d ₁	440 mm	Rip diameter shaft washer
B	122 mm	Width
r _{min}	6 mm	Minimum chamfer dimension

Temperature range

T _{min}	-20 °C	Operating temperature min.
T _{max}	120 °C	Operating temperature max.




Additional information

K89448-M	Axial roller and cage assembly
GS89448	Housing Washer
WS89448	Shaft washer

Characteristics

 Axial load in one direction

 Grease Lubrication

 Oil Lubrication

 Not sealed

 Large bearing