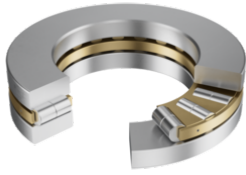


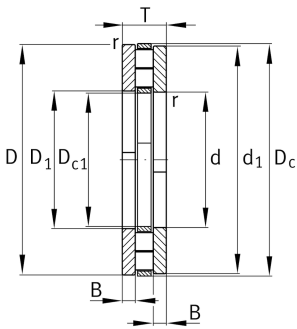
**89444-M**

Axial cylindrical roller bearing

Axial cylindrical roller bearings 894, single direction, comprising K894, GS, WS



Technical information

**Main Dimensions & Performance Data**

d	220 mm	Bore diameter
D	420 mm	Outside diameter
T	122 mm	Height
C _a	2.950.000 N	Basic dynamic load rating, axial
C _{0a}	11.500.000 N	Basic static load rating, axial
C _{ua}	1.000.000 N	Fatigue load limit, axial
n _G	900 1/min	Limiting speed
n _{gr}	270 1/min	Reference speed
m	86,21 kg	Weight

Dimensions

D ₁	225 mm	Bore diameter housing washer
d ₁	420 mm	Rip diameter shaft washer
r _{min}	6 mm	Minimum chamfer dimension

Temperature range

T _{min}	-20 °C	Operating temperature min.
T _{max}	120 °C	Operating temperature max.




Additional information

K89444-M	Axial roller and cage assembly
GS89444	Housing Washer
WS89444	Shaft washer

Characteristics

 Axial load in one direction

 Grease Lubrication

 Oil Lubrication

 Not sealed

 Large bearing