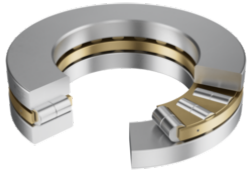


**89436-M**

## Axial cylindrical roller bearing

Axial cylindrical roller bearings 894, single direction, comprising K894, GS, WS



## Technical information

**Main Dimensions & Performance Data**

d	180 mm	Bore diameter
D	360 mm	Outside diameter
T	109 mm	Height
C <sub>a</sub>	2.220.000 N	Basic dynamic load rating, axial
C <sub>0a</sub>	8.200.000 N	Basic static load rating, axial
C <sub>ua</sub>	740.000 N	Fatigue load limit, axial
n <sub>G</sub>	1.070 1/min	Limiting speed
n <sub>gr</sub>	355 1/min	Reference speed
≈m	58,5 kg	Weight

**Dimensions**

D <sub>1</sub>	184 mm	Bore diameter housing washer
d <sub>1</sub>	360 mm	Rip diameter shaft washer
r <sub>min</sub>	5 mm	Minimum chamfer dimension

**Temperature range**

T <sub>min</sub>	-20 °C	Operating temperature min.
T <sub>max</sub>	120 °C	Operating temperature max.



### Additional information


---

K89436-M	Axial roller and cage assembly
GS89436	Housing Washer
WS89436	Shaft washer

### Characteristics

---

 Axial load in one direction

 Grease Lubrication

 Oil Lubrication

 Not sealed

 Large bearing