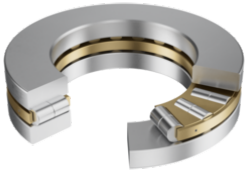


**89434-M**

Axial cylindrical roller bearing

Axial cylindrical roller bearings 894, single direction, comprising K894, GS, WS



Technical information

**Main Dimensions & Performance Data**

d	170 mm	Bore diameter
D	340 mm	Outside diameter
T	103 mm	Height
C _a	2.010.000 N	Basic dynamic load rating, axial
C _{0a}	7.400.000 N	Basic static load rating, axial
C _{ua}	680.000 N	Fatigue load limit, axial
n _G	1.130 1/min	Limiting speed
n _{gr}	375 1/min	Reference speed
m	49,398 kg	Weight

Dimensions

D ₁	174 mm	Bore diameter housing washer
d ₁	340 mm	Rip diameter shaft washer
r _{min}	5 mm	Minimum chamfer dimension

Temperature range

T _{min}	-20 °C	Operating temperature min.
T _{max}	120 °C	Operating temperature max.




Additional information

K89434-M	Axial roller and cage assembly
GS89434	Housing Washer
WS89434	Shaft washer

Characteristics

 Axial load in one direction

 Grease Lubrication

 Oil Lubrication

 Not sealed

 Large bearing