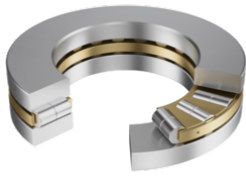


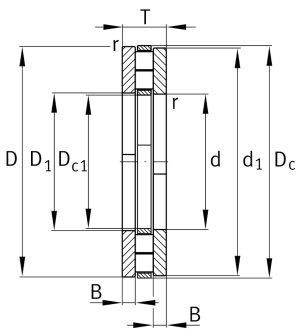
**89430-M**

Axial cylindrical roller bearing

Axial cylindrical roller bearings 894, single direction, comprising K894, GS, WS



Technical information

**Main Dimensions & Performance Data**

d	150 mm	Bore diameter
D	300 mm	Outside diameter
T	90 mm	Height
C _a	1.580.000 N	Basic dynamic load rating, axial
C _{0a}	5.700.000 N	Basic static load rating, axial
C _{ua}	530.000 N	Fatigue load limit, axial
n _G	1.250 1/min	Limiting speed
n _{gr}	440 1/min	Reference speed
m	33,61 kg	Weight

Dimensions

D ₁	154 mm	Bore diameter housing washer
d ₁	300 mm	Rip diameter shaft washer
r _{min}	4 mm	Minimum chamfer dimension

Temperature range

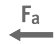
T _{min}	-20 °C	Operating temperature min.
T _{max}	120 °C	Operating temperature max.




Additional information

K89430-M	Axial roller and cage assembly
GS89430	Housing Washer
WS89430	Shaft washer

Characteristics

 Axial load in one direction

 Grease Lubrication

 Oil Lubrication

 Not sealed