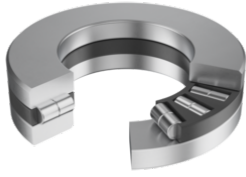


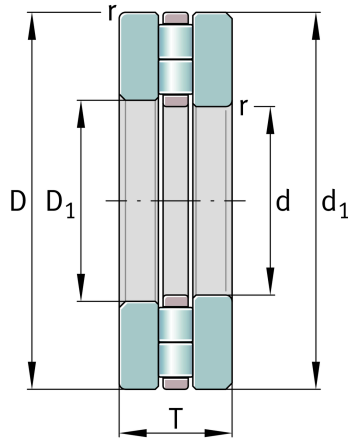
**89414-TV** [↗](#)

Axial cylindrical roller bearing

Axial cylindrical roller bearings 893, single direction, comprising K893, GS, WS



Technical information



Your current product variant

Cage	TV	Plastic Cage made from PA66
------	----	-----------------------------

Main Dimensions & Performance Data

d	70 mm	Bore diameter
D	150 mm	Outside diameter
T	48 mm	Height
C _a	475.000 N	Basic dynamic load rating, axial
C _{0a}	1.500.000 N	Basic static load rating, axial
C _{ua}	160.000 N	Fatigue load limit, axial
n _G	2.600 1/min	Limiting speed
n _{gr}	1.000 1/min	Reference speed
m	4,106 kg	Weight

Dimensions

D ₁	73 mm	Bore diameter housing washer
d ₁	150 mm	Rip diameter shaft washer
r _{min}	2 mm	Minimum chamfer dimension

Temperature range

T _{min}	-20 °C	Operating temperature min.
T _{max}	120 °C	Operating temperature max.



Additional information

K89414-TV	Axial roller and cage assembly
GS89414	Housing Washer
WS89414	Shaft washer

Characteristics

 Axial load in one direction

 Grease Lubrication

 Oil Lubrication

 Not sealed