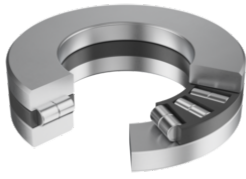


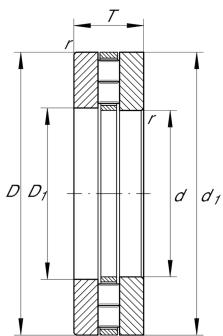
**89315-TV**

## Axial cylindrical roller bearing

Axial cylindrical roller bearings 893, single direction, comprising K893, GS, WS



## Technical information



## Your current product variant

Cage	TV	Plastic Cage made from PA66
------	----	-----------------------------

## Main Dimensions &amp; Performance Data

d	75 mm	Bore diameter
D	135 mm	Outside diameter
T	36 mm	Height
$C_a$	285.000 N	Basic dynamic load rating, axial
$C_{0a}$	1.010.000 N	Basic static load rating, axial
$C_{ua}$	93.000 N	Fatigue load limit, axial
$n_G$	2.750 1/min	Limiting speed
$n_{gr}$	1.080 1/min	Reference speed
$m$	2,223 kg	Weight

## Mounting dimensions

$d_a$	132 mm	Minimum diameter shaft shoulder
$D_a$	81 mm	Maximum diameter of housing shoulder
$r_a$	1,5 mm	Recess radius



### Dimensions

D <sub>1</sub>	77 mm	Bore diameter housing washer
d <sub>1</sub>	135 mm	Rip diameter shaft washer
B	36 mm	Width
r <sub>min</sub>	1,5 mm	Minimum chamfer dimension
D <sub>c1</sub>	75 mm	Cage bore diameter

### Temperature range

T <sub>min</sub>	-20 °C	Operating temperature min.
T <sub>max</sub>	120 °C	Operating temperature max.

### Additional information

K89315-TV	Axial roller and cage assembly
GS89315	Housing Washer
WS89315	Shaft washer

### Characteristics

-  Axial load in one direction
-  Grease Lubrication
-  Oil Lubrication
-  Not sealed