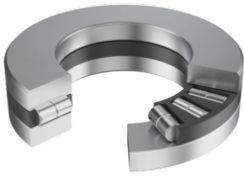


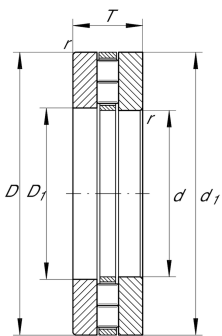
**89313-TV**

Axial cylindrical roller bearing

Axial cylindrical roller bearings 893, single direction, comprising K893, GS, WS



Technical information

**Your current product variant**

Cage	TV	Plastic Cage made from PA66
------	----	-----------------------------

Main Dimensions & Performance Data

d	65 mm	Bore diameter
D	115 mm	Outside diameter
T	30 mm	Height
C_a	194.000 N	Basic dynamic load rating, axial
C_{0a}	670.000 N	Basic static load rating, axial
C_{ua}	59.000 N	Fatigue load limit, axial
n_G	3.200 1/min	Limiting speed
n_{gr}	1.330 1/min	Reference speed
m	1,31 kg	Weight

Mounting dimensions

d_a	113 mm	Minimum diameter shaft shoulder
D_a	71 mm	Maximum diameter of housing shoulder
r_a	1,1 mm	Recess radius



Dimensions

D ₁	67 mm	Bore diameter housing washer
d ₁	115 mm	Rip diameter shaft washer
B	30 mm	Width
r _{min}	1,1 mm	Minimum chamfer dimension
D _{c1}	65 mm	Cage bore diameter





Temperature range

T _{min}	-20 °C	Operating temperature min.
T _{max}	120 °C	Operating temperature max.

Additional information

K89313-TV	Axial roller and cage assembly
GS89313	Housing Washer
WS89313	Shaft washer

Characteristics

-  Axial load in one direction
-  Grease Lubrication
-  Oil Lubrication
-  Not sealed