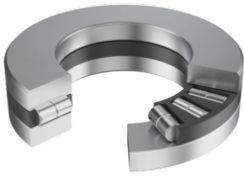


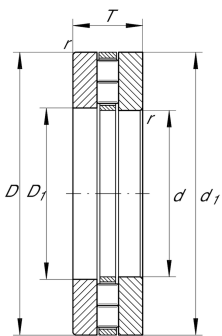
**89312-TV**

Axial cylindrical roller bearing

Axial cylindrical roller bearings 893, single direction, comprising K893, GS, WS



Technical information

**Your current product variant**

| | | |
|------|----|-----------------------------|
| Cage | TV | Plastic Cage made from PA66 |
|------|----|-----------------------------|

Main Dimensions & Performance Data

| | | |
|----------|-------------|----------------------------------|
| d | 60 mm | Bore diameter |
| D | 110 mm | Outside diameter |
| T | 30 mm | Height |
| C_a | 197.000 N | Basic dynamic load rating, axial |
| C_{0a} | 670.000 N | Basic static load rating, axial |
| C_{ua} | 59.000 N | Fatigue load limit, axial |
| n_G | 3.400 1/min | Limiting speed |
| n_{gr} | 1.350 1/min | Reference speed |
| m | 1.250 g | Weight |

Mounting dimensions

| | | |
|-------|--------|--------------------------------------|
| d_a | 108 mm | Minimum diameter shaft shoulder |
| D_a | 66 mm | Maximum diameter of housing shoulder |
| r_a | 1,1 mm | Recess radius |



Dimensions

| | | |
|-----------|--------|------------------------------|
| D_1 | 62 mm | Bore diameter housing washer |
| d_1 | 110 mm | Rip diameter shaft washer |
| B | 30 mm | Width |
| r_{min} | 1,1 mm | Minimum chamfer dimension |
| D_{c1} | 60 mm | Cage bore diameter |





Temperature range

| | | |
|-----------|--------|----------------------------|
| T_{min} | -20 °C | Operating temperature min. |
| T_{max} | 120 °C | Operating temperature max. |

Additional information

| | |
|-----------|--------------------------------|
| K89312-TV | Axial roller and cage assembly |
| GS89312 | Housing Washer |
| WS89312 | Shaft washer |

Characteristics

| | |
|---|-----------------------------|
|  | Axial load in one direction |
|  | Grease Lubrication |
|  | Oil Lubrication |
|  | Not sealed |