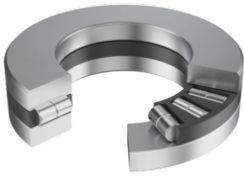


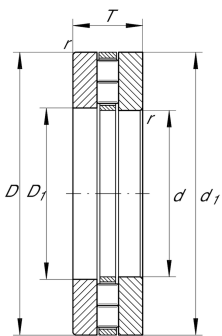
**89309-TV**

Axial cylindrical roller bearing

Axial cylindrical roller bearings 893, single direction, comprising K893, GS, WS



Technical information

**Your current product variant**

Cage	TV	Plastic Cage made from PA66
------	----	-----------------------------

Main Dimensions & Performance Data

d	45 mm	Bore diameter
D	85 mm	Outside diameter
T	24 mm	Height
C_a	139.000 N	Basic dynamic load rating, axial
C_{0a}	445.000 N	Basic static load rating, axial
C_{ua}	45.500 N	Fatigue load limit, axial
n_G	4.450 1/min	Limiting speed
n_{gr}	1.620 1/min	Reference speed
m	0,613 kg	Weight

Mounting dimensions

d_a	83 mm	Minimum diameter shaft shoulder
D_a	49 mm	Maximum diameter of housing shoulder
r_a	1 mm	Recess radius



Dimensions

D ₁	47 mm	Bore diameter housing washer
d ₁	85 mm	Rip diameter shaft washer
B	24 mm	Width
r _{min}	1 mm	Minimum chamfer dimension
D _{c1}	45 mm	Cage bore diameter



Temperature range

T _{min}	-20 °C	Operating temperature min.
T _{max}	120 °C	Operating temperature max.

Additional information

K89309-TV	Axial roller and cage assembly
GS89309	Housing Washer
WS89309	Shaft washer

Characteristics

-  Axial load in one direction
-  Grease Lubrication
-  Oil Lubrication
-  Not sealed