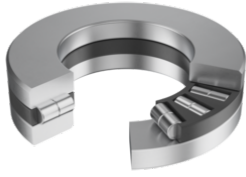


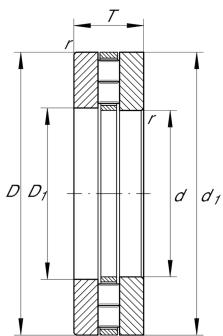
**89307-TV** [↗](#)

Axial cylindrical roller bearing

Axial cylindrical roller bearings 893, single direction, comprising K893, GS, WS



Technical information



Your current product variant

Cage	TV	Plastic Cage made from PA66
------	----	-----------------------------

Main Dimensions & Performance Data

d	35 mm	Bore diameter
D	68 mm	Outside diameter
T	20 mm	Height
C_a	83.000 N	Basic dynamic load rating, axial
C_{0a}	237.000 N	Basic static load rating, axial
C_{ua}	23.600 N	Fatigue load limit, axial
n_G	5.700 1/min	Limiting speed
n_{gr}	2.420 1/min	Reference speed
m	324,9 g	Weight

Mounting dimensions

d_a	67 mm	Minimum diameter shaft shoulder
D_a	38 mm	Maximum diameter of housing shoulder



Dimensions

D ₁	37 mm	Bore diameter housing washer
d ₁	68 mm	Rip diameter shaft washer
B	20 mm	Width
r _{min}	1 mm	Minimum chamfer dimension
D _{c1}	35 mm	Cage bore diameter

Temperature range

T _{min}	-20 °C	Operating temperature min.
T _{max}	120 °C	Operating temperature max.

Additional information

K89307-TV	Axial roller and cage assembly
GS89307	Housing Washer
WS89307	Shaft washer

Characteristics

-  Axial load in one direction
-  Grease Lubrication
-  Oil Lubrication
-  Not sealed