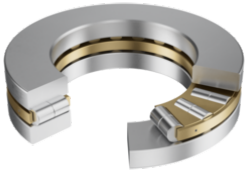


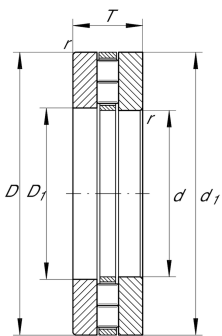
**89318-M**

Axial cylindrical roller bearing

Axial cylindrical roller bearing 893..-M, two-row



Technical information



Your current product variant

Cage	M	Brass Cage
------	---	------------

Main Dimensions & Performance Data

d	90 mm	Bore diameter
D	155 mm	Outside diameter
T	39 mm	Height
C _a	335.000 N	Basic dynamic load rating, axial
C _{0a}	1.200.000 N	Basic static load rating, axial
C _{ua}	111.000 N	Fatigue load limit, axial
n _G	2.350 1/min	Limiting speed
n _{gr}	980 1/min	Reference speed
m	3,63 kg	Weight

Mounting dimensions

d _a	152 mm	Minimum diameter shaft shoulder
D _a	98 mm	Maximum diameter of housing shoulder
r _a	1,5 mm	Recess radius



Dimensions

D ₁	93 mm	Bore diameter housing washer
d ₁	155 mm	Rip diameter shaft washer
B	39 mm	Width
r _{min}	1,5 mm	Minimum chamfer dimension
D _{c1}	90 mm	Cage bore diameter





Temperature range

T _{min}	-20 °C	Operating temperature min.
T _{max}	120 °C	Operating temperature max.

Additional information

K89318-M	Axial roller and cage assembly
GS89318	Housing Washer
WS89318	Shaft washer

Characteristics

-  Axial load in one direction
-  Grease Lubrication
-  Oil Lubrication
-  Not sealed