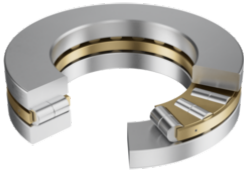


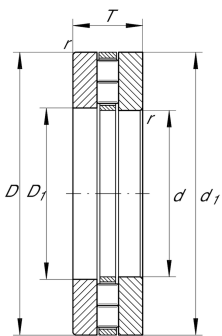
**89317-M**

Axial cylindrical roller bearing

Axial cylindrical roller bearing 893..-M, two-row



Technical information



Your current product variant

Cage	M	Brass Cage
------	---	------------

Main Dimensions & Performance Data

d	85 mm	Bore diameter
D	150 mm	Outside diameter
T	39 mm	Height
C _a	325.000 N	Basic dynamic load rating, axial
C _{0a}	1.140.000 N	Basic static load rating, axial
C _{ua}	106.000 N	Fatigue load limit, axial
n _G	2.450 1/min	Limiting speed
n _{gr}	1.030 1/min	Reference speed
m	3,399 kg	Weight

Mounting dimensions

d _a	147 mm	Minimum diameter shaft shoulder
D _a	93 mm	Maximum diameter of housing shoulder
r _a	1,5 mm	Recess radius



Dimensions

D ₁	88 mm	Bore diameter housing washer
d ₁	150 mm	Rip diameter shaft washer
B	39 mm	Width
r _{min}	1,5 mm	Minimum chamfer dimension
D _{c1}	85 mm	Cage bore diameter



Temperature range

T _{min}	-20 °C	Operating temperature min.
T _{max}	120 °C	Operating temperature max.

Additional information

K89317-M	Axial roller and cage assembly
GS89317	Housing Washer
WS89317	Shaft washer

Characteristics

-  Axial load in one direction
-  Grease Lubrication
-  Oil Lubrication
-  Not sealed