

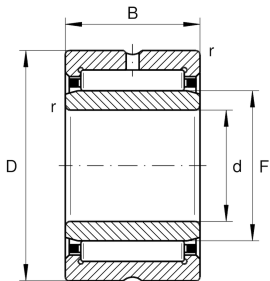
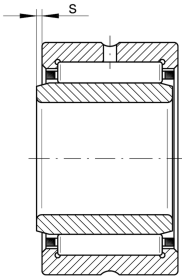
**NKI30/20-TV-XL-C3**

Needle roller bearing

Needle roller bearings NKI, light series

X-life

Technical information



Your current product variant

Cage	TV	Plastic Cage made from PA66
Radial internal clearance	C3 (Group 3)	Internal clearance larger than CN
Coating	Without	

Main Dimensions & Performance Data

d	30 mm	Bore diameter
D	45 mm	Outside diameter
B	20 mm	Width
C _r	31.000 N	Basic dynamic load rating, radial
C _{0r}	48.500 N	Basic static load rating, radial
C _{ur}	8.600 N	Fatigue load limit, radial
n _G	12.900 1/min	Limiting speed
n _{gr}	6.800 1/min	Reference speed
≈m	0,107 kg	Weight

Dimensions

F	35 mm	Raceway diameter inner ring
r _{min}	0,3 mm	Minimum chamfer dimension
s	0,5 mm	Axial displacement



Temperature range

T_{\min} -30 °C Operating temperature min.

T_{\max} 120 °C Operating temperature max.

Characteristics



Radial load



Grease Lubrication



Oil Lubrication



Not sealed



Small design envelope