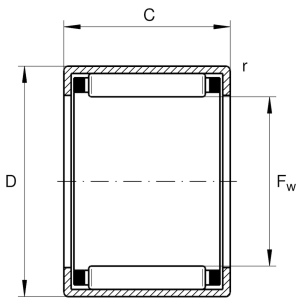


**HK6020-AS1**

Drawn cup needle roller bearing open end

Drawn cup needle roller bearing open end
HK...AS1, single row, with cage

Technical information

**Your current product variant**

Lubricant	Without	
Lubrication hole	AS1	With (1)
Coating	Without	
Sealing	Without	

Main Dimensions & Performance Data

F_w	60 mm	Under roller diameter
D	68 mm	Outside diameter
C	20 mm	Width
C_r	33.500 N	Basic dynamic load rating, radial
C_{0r}	75.000 N	Basic static load rating, radial
C_{ur}	9.900 N	Fatigue load limit, radial
n_G	4.450 1/min	Limiting speed
n_G Grease	2.650 1/min	Limiting speed for grease lubrication
n_{gr}	3.500 1/min	Reference speed
$\approx m$	82,26 g	Weight

Dimensions

C_1	20 mm	Width, outer ring
r_{min}	0,8 mm	Minimum chamfer dimension

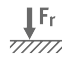


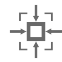


Temperature range

T_{min} -30 °C Operating temperature min.

T_{max} 140 °C Operating temperature max.

Characteristics

-  Radial load
-  Grease Lubrication
-  Oil Lubrication
-  Small design envelope