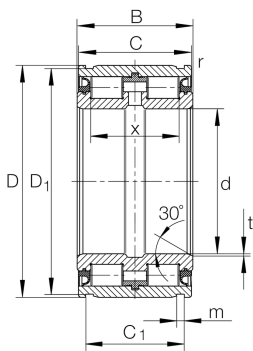


**SL045019-D**

## Cylindrical roller bearing

Cylindrical roller bearing SL04...-D, full complement roller set, two-row, locating bearing, central rib on outer ring, 3 ribs on inner ring, type SL04

## Technical information

**Your current product variant**

Design	D	New outer Contour
Radial internal clearance	CN (Group N)	Normal internal clearance
Tolerance class	PN	Normal (ISO 492:2023)
Number of rows	2	Double-row design

**Main Dimensions & Performance Data**

d	95 mm	Bore diameter
D	145 mm	Outside diameter
B	67 mm	Width
C <sub>r</sub>	315.000 N	Basic dynamic load rating, radial
C <sub>0r</sub>	530.000 N	Basic static load rating, radial
C <sub>ur</sub>	72.000 N	Fatigue load limit, radial
n <sub>G Grease</sub>	1.360 1/min	Limiting speed for grease lubrication
≈m	3,7 kg	Weight



### Mounting dimensions

C <sub>a1</sub>	54 mm	Mounting dim for snap ring WRE (not included in delivery) Tolerance: 0/-0,2
C <sub>a2</sub>	51 mm	Mounting dim for retaining ring to DIN 471 (not incl. In delivery) Tol: 0/-0,2
d <sub>1</sub>	113,5 mm	Rib diameter inner ring
d <sub>2</sub>	122 mm	Sealing diameter (rib)
d <sub>3</sub>	157 mm	Outside diameter of snap ring WRE
d <sub>1 min</sub>	113,5 mm	Minimum diameter shaft shoulder
	30 °	Chamfer angle
	-0,2 mm	Lower distance snap ring tolerance
	-0,2 mm	Lower distance retaining ring tolerance
	0 mm	Upper distance snap ring tolerance
	0 mm	Upper distance retaining ring tolerance
	0 mm	Lower distance ring groove tolerance
	0,2 mm	Upper distance ring groove tolerance

### Dimensions

C	66 mm	Width, outer ring
C <sub>1</sub>	59,2 mm	Distance ring grooves
D <sub>1</sub>	142 mm	Diameter of groove
m	4,2 mm	Width of groove
r <sub>min</sub>	0,6 mm	Minimum chamfer dimension
t	1,5 mm	Chamfer width
X	54 mm	Distance between rolling elements

### Temperature range

T <sub>min</sub>	-30 °C	Operating temperature min.
T <sub>max</sub>	120 °C	Operating temperature max.