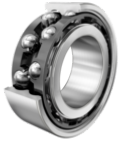
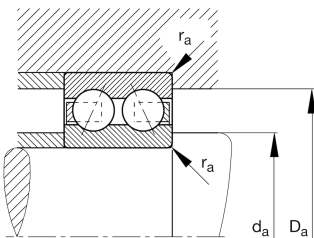
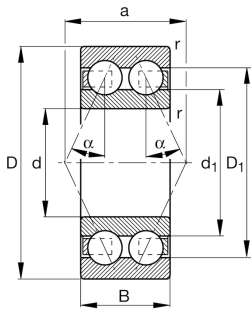


**FAG****X-life****3303-BD-XL-TVH-L285**

Angular contact ball bearing

Angular contact ball bearing 33..-BD-XL-TVH,
double row, X-life, plastic cage

Technical information

**Your current product variant**

| | | |
|----------------------------------|---------|--|
| Design variant | B | Bearing without filling slot |
| Changed internal design | D | D |
| Sealing | Without | Not sealed |
| Cage | TVH | Solid cage made of glass-fiber reinforced polyamide PA66 |
| Tolerance class | P6 | Class 6 (ISO 492:2023) |
| Dimensional / heat stabilization | SN | Rings dimensional stabilized up to 120° |
| Lubricant | L285 | Grease (L285/customer specific) |
| Axial internal clearance | CN | Group N (CN) |

Main Dimensions & Performance Data

| | | |
|-----------------|--------------|-----------------------------------|
| d | 17 mm | Bore diameter |
| D | 47 mm | Outside diameter |
| B | 22,2 mm | Width |
| C _r | 22.500 N | Basic dynamic load rating, radial |
| C _{0r} | 13.100 N | Basic static load rating, radial |
| C _{ur} | 910 N | Fatigue load limit, radial |
| n _G | 16.600 1/min | Limiting speed |
| n _{gr} | 12.600 1/min | Reference speed |
| m | 0,173 kg | Weight |



Mounting dimensions

| | | |
|--------------|---------|--------------------------------------|
| $d_{a \min}$ | 22,6 mm | Minimum diameter shaft shoulder |
| $D_{a \max}$ | 41,4 mm | Maximum diameter of housing shoulder |
| $r_{a \max}$ | 1 mm | Maximum fillet radius |






Dimensions

| | | |
|------------|----------|---|
| r_{\min} | 1 mm | Minimum chamfer dimension |
| D_1 | 38,97 mm | Shoulder diameter outer ring |
| D_2 | 41,13 mm | Caliber diameter outer ring |
| d_1 | 28,52 mm | Shoulder diameter inner ring |
| d_2 | 27,14 mm | Caliber diameter inner ring |
| a | 27,5 mm | Distance between the apexes of the pressure cones |
| α | 30 ° | Contact angle |

Temperature range

| | | |
|------------|--------|----------------------------|
| T_{\min} | -20 °C | Operating temperature min. |
| T_{\max} | 120 °C | Operating temperature max. |

Characteristics

| | |
|---|------------------------------|
|  | Radial load |
|  | Axial load in one direction |
|  | Axial load in two directions |
|  | Grease Lubrication |
|  | Not sealed |